



**PUBLIC WORKS DEPARTMENT
WATER RESOURCE DEPARTMENT**

DETAILED PROJECT REPORT

**ADDITIONAL PROPOSALS FOR PROVIDING LINING IN
HEAD IRRIGATION CHANNEL AND FLOW MEASURING
DIVICE IN **AGNIYAR SUB BASIN**
(PHASE-II) UNDER IAMWARM PROJECT.**

REGION : TRICHY REGION, TRICHY
CIRCLE : LOWER CAUVERY BASIN CIRCLE,
THANJAVUR.
DIVISION : AGNIYAR BASIN DIVISION,
PATTUKKOTTAI.

ESTIMATE AMOUNT.RS. 700.58 Lakh

TN - IAMWARM PROJECT
ADDITIONAL PROPOSAL
AGNIYAR SUB BASIN
INDEX

Sl.No.	Description	Page No
1	Introduction of the Sub basin	
2	Format I	
3	Format II	
4	Drawings for lining in head irrigation channels & measuring devices	
5	Sub Basin maps	

**Additional proposals for providing lining in head irrigation channel and
Flow measuring device in Agniyar sub basin (phase- ii) under
TN IAMWARM project.**

The lining in head irrigation channel and installation of measuring device has been proposed for phase I and II sub basins by utilizing the Project savings as discussed with the World Bank, during the implementation support mission from Sept 12-20th 2011.

Accordingly in the Agniyar Sub Basin of Phase the following works have been proposed.

- i) Lining in head irrigation channel below the tanks sluice using c.c M 15 as per Sketch enclosed.
- ii) Installing flow measuring device in the irrigation channel as per sketch.
- iii) L.S. provision of 2.8 % for provision of labour welfare @0.30% and provision for contingences, advertisement charges, photographic charges@2.5%.

The package details are appended separately and works are proposed to be taken up under National shopping procedure.

The total cost for the DPR works out to. Rs.700.58 lakh.

EXECUTIVE ENGINEER,WRD.,
AGNIYAR BASIN DIVISION,
PATTUKKOTTAI.

SUPERINTENDING ENGINEER,WRD.,
LOWER CAUVERY BASIN CIRCLE,
THANJAVUR.

CHIEF ENGINEER,WRD.,
TRICHY REGION,
TRICHY.

FORMAT - I

NAME OF THE REGION TRICHY
 NAME OF CIRCLE LOWER CAUVERY BASIN CIRCLE, THANJAVUR
 NAME OF DIVISION AGNIYAR BASIN DIVISION,PATTUKKOTTAL.
 NAME OF SUB BASIN AGNIYAR SUB BASIN
 TOTAL NUMBER OF TANKS 190

NO OF TANKS,SLUICES IN EACH PACKAGE

Sl. No. (1)	Package No. (2)	Name of Tank (3)	No. of Sluices (4)	Flow Measuring Device		Lining in Head Irrigation Channel			Amount in Lakhs (10)	L.S. Provision @2.80% (11)	Grand Total (12)	Remarks (13)
				No (5)	Amount in Lakhs (6)	Type of Soil BC/OS* (7)	Length in metre (8)	Amount in Lakhs (9)				
1	Package -1	Keelakaikudykulam	2	2	0.20	OS	60	1.80	2.00			
		Odugankulam	6	6	0.60	OS	180	5.40	6.00			
		Semathikulam	4	4	0.40	OS	120	3.60	4.00			
		Total	12	12	1.20		360.00	10.80	12.00	0.34	12.34	
2	Package -2	Nanjure Periyakulam	3	3	0.30	OS	120	3.60	3.90			
		Periyamaruthankulam	2	2	0.20	OS	80	2.40	2.60			
		Periyakulam	3	3	0.30	OS	120	3.60	3.90			
		Total	8	8	0.80		320	9.60	10.40	0.29	10.69	

3	Package -3	Mosakudy periyakulam	3	3	0.30	OS	90	2.70	3.00			
		Malaiyettankulam, Alagikulam, Kilkulupaikulam	5	5	0.50	OS	150	4.50	5.00			
		Kulathur Periyakualm	4	4	0.40	OS	120	3.60	4.00			
		Total	12	12	1.20		360	11	12.00	0.34	12.34	
4	Package -4	Keeranur Periyakulam	3	3	0.30	OS	150	4.50	4.80			
		Periya Alathikulam	1	1	0.10	OS	50	1.50	1.60			
		Periya Alathikulam	3	3	0.30	OS	150	4.50	4.80			
		Total	7	7	0.70		350	10.50	11.20	0.31	11.51	
Sub Total			39	39	3.90		1390	41.70	45.60			
Sl.No. (1)	Package No.(2)	Name of Tank(3)	No. of Sluices(4)	Flow Measuring Device		Lining in Head Irrigation Channel			Amount in Lakhs(10)	L.S.Provision @2.80%(11)	Grand Total(12)	Remarks(13)
				No (5)	Amount in Lakhs (6)	Type of Soil BC/OS* (7)	Length in metre (8)	Amount in Lakhs (9)				
B/F			39	39	3.90		1390	41.70	45.60			
5	Package -5	Annikulam	1	1	0.10	OS	40	1.20	1.30			
		Odukur Periyakulam	3	3	0.30	OS	105	3.15	3.45			
		Villathykulam Karupaddykulam, Kusavankulam	7	7	0.70	OS	210	6.30	7.00			
		Total	11	11	1.10		355	10.65	11.75	0.33	12.08	

6	Package -6	Oorakulam,Kalankulam, Alankulam	4	4	0.40	OS	120	3.60	4.00			
		Sittukulam, Kalakudykulam, Nanaganachikulam	6	6	0.60	OS	120	3.60	4.20			
		Passipatty Periyakulam	5	5	0.50	OS	100	3.00	3.50			
		Total	15	15	1.50		340	10.20	11.70	0.33	12.03	
7	Package -7	Tayanikulam	4	4	0.40	OS	120	3.60	4.00			
		Illupaikulam	3	3	0.30	OS	120	3.60	3.90			
		Valamangalam Periyakulam	3	3	0.30	OS	120	3.60	3.90			
		Total	10	10	1.00		360	10.80	11.80	0.33	12.13	
8	Package -8	a)Thinnanikulam b)Mattanikulam	3	3	0.30	OS	120	3.60	3.90			
		a)Periyakulam b)Thanerikulam c)Ponnerikulamd)Koothadikulam	3	3	0.30	OS	120	3.60	3.90			
		Mekkudikulam	3	3	0.30	OS	120	3.60	3.90			
		Total	9	9	0.90		360	10.80	11.70	0.33	12.03	
9	Package -9	Neduneherikulam	4	4	0.40	OS	160	4.80	5.20			
		a)Maruthaakulam b)Naduvikulam	2	2	0.20	OS	80	2.40	2.60			
		a) Kulamuthikulam b)Kalankulam	3	3	0.30	OS	120	3.60	3.90			
		Total	9	9	0.90		360	10.80	11.70	0.33	12.03	
Sub Total			93	93	9.30		3165	94.95	104.25			

Sl.No. (1)	Package No.(2)	Name of Tank(3)	No. of Sluices(4)	Flow Measuring Device		Lining in Head Irrigation Channel			Amount in Lakhs(10)	L.S.Provision @2.80%(11)	Grand Total(12)	Remarks(13)
				No (5)	Amount in Lakhs (6)	Type of Soil BC/OS* (7)	Length in metre (8)	Amount in Lakhs (9)				
B/F			93	93	9.30		3165	94.95	104.25			
10	Package - 10	a) Alankulam b)Peykulam c)Melikulam	3	3	0.30	OS	120	3.60	3.90			
		Melur Periyakulam	2	2	0.20	OS	80	2.40	2.60			
		Piranthaikulam	3	3	0.30	OS	120	3.60	3.90			
		Total	8	8	0.80		320.00	9.60	10.40	0.29	10.69	
11	Package - 11	Vellanikulam	2	2	0.20	OS	80	2.40	2.60			
		a) PeriyaSengulam b)Chinnasengulam	2	2	0.20	OS	70	2.10	2.30			
		Senayakudi Periyakulam	3	3	0.30	OS	90	2.70	3.00			
		Killanikulam	4	4	0.40	OS	120	3.60	4.00			
		Total	11	11	1.10		360	10.80	11.90	0.33	12.23	
12	Package - 12	Seerakulam	5	5	0.50	OS	150	4.50	5.00			
		Perakulam	5	5	0.50	OS	150	4.50	5.00			
		Total	10	10	1.00		300	9.00	10.00	0.28	10.28	

13	Package - 13	Kumaramuthankulam	2	2	0.20	OS	80	2.40	2.60			
		Kovilveerakudikanmoi	3	3	0.30	OS	90	2.70	3.00			
		a)Thiruppakulam b)Velankulam c)Pudukulam	3	3	0.30	OS	105	3.15	3.45			
		Vathanakurichi Periyakulam	2	2	0.20	OS	60	1.80	2.00			
		Total	10	10	1.00		335	10.05	11.05	0.31	11.36	
14	Package - 14	Muthukadu Periyakulam	2	2	0.20	OS	80	2.40	2.60			
		Erayakulam	3	3	0.30	OS	120	3.60	3.90			
		Sathinikulam	5	5	0.50	OS	150	4.50	5.00			
		Thennankudi Periyakulam										
		Total	10	10	1.00		350	10.50	11.50	0.32	11.82	
Sub Total			142	142	14.20		4830	144.90	159.10			
Sl.No. (1)	Package No.(2)	Name of Tank(3)	No. of Sluices(4)	Flow Measuring Device		Lining in Head Irrigation Channel			Amount in Lakhs(10)	L.S.Provision @2.80%(11)	Grand Total(12)	Remarks(13)
				No (5)	Amount in Lakhs (6)	Type of Soil BC/OS* (7)	Length in metre (8)	Amount in Lakhs (9)				
B/F			142	142	14.20		4830	144.90	159.10			

15	Package - 15	Aranikulam	4	4	0.40	OS	120	3.60	4.00			
		Poongudikulam	2	2	0.20	OS	70	2.10	2.30			
		Ammankulam	5	5	0.50	OS	150	4.50	5.00			
		Total	11	11	1.10		340	10.20	11.30	0.32	11.62	
16	Package - 16	Periyakulam	5	5	0.50	OS	100	3.00	3.50			
		a) Thethikulam b)kuttaikulam	4	4	0.40	OS	120	3.60	4.00			
		a)Periyakulam b)Sudalaikulam c) Chettikulam	3	3	0.30	OS	90	2.70	3.00			
		Pothiyakulam	1	1	0.10	OS	40	1.20	1.30			
		Total	13	13	1.30		350	10.50	11.80	0.33	12.13	
17	Package - 17	Minnadikulam	4	4	0.40	OS	120	3.60	4.00			
		a)Mottankulam b)Ottavikulam	3	3	0.30	OS	90	2.70	3.00			
		Vaithikulam	4	4	0.40	OS	80	2.40	2.80			
		Chinnatharappakulam	2	2	0.20	OS	60	1.80	2.00			
		Total	13	13	1.30		350	10.50	11.80	0.33	12.13	
18	Package - 18	Periyatharappa kulam	6	6	0.60	OS	180	5.40	6.00			
		Palumuthikulam	3	3	0.30	OS	90	2.70	3.00			
		Poondikulam	3	3	0.30	OS	90	2.70	3.00			
		Total	12	12	1.20		360	10.80	12.00	0.34	12.34	

19	Package - 19	Kuruvankulam	3	3	0.30	OS	120	3.60	3.90			
		Kalimuthikulam	2	2	0.20	OS	80	2.40	2.60			
		Pungankulam	1	1	0.10	OS	40	1.20	1.30			
		Total	6	6	0.600		240	7.20	7.80	0.22	8.02	
Sub Total			197	197	19.70		6470	194.10	213.80			
Sl.No. (1)	Package No.(2)	Name of Tank(3)	No. of Sluices(4)	Flow Measuring Device		Lining in Head Irrigation Channel			Amount in Lakhs(10)	L.S.Provision @2.80%(11)	Grand Total(12)	Remarks(13)
				No (5)	Amount in Lakhs (6)	Type of Soil BC/OS* (7)	Length in metre (8)	Amount in Lakhs (9)				
B/F			197	197	19.70		6470	194.10	213.80			
20	Package - 20	Melavellakulam	3	3	0.30	OS	120	3.60	3.90			
		Keelavellakulam	2	2	0.20	OS	80	2.40	2.60			
		Varappur Periyakulam	4	4	0.40	OS	160	4.80	5.20			
		Total	9	9	0.9000		360	10.80	11.70	0.33	12.03	
21	Package - 21	Sempattur Periyakulam	2	2	0.20	OS	80	2.40	2.60			
		Vagavasal Periyakulam	3	3	0.30	OS	105	3.15	3.45			
		Pasukulam	5	5	0.50	OS	175	5.25	5.75			
		Total	10	10	1.00		360	10.80	11.80	0.33	12.13	
22	Package - 22	Paallavankulam	4	4	0.40	OS	160	4.80	5.20			
		Harikulam & Sirukulam	4	4	0.40	OS	160	4.80	5.20			

		Total	8	8	0.80		320	9.60	10.40	0.29	10.69	
23	Package - 23	Sirukakulam	2	2	0.20	OS	90	2.70	2.90			
		Perungakulam	3	3	0.30	OS	120	3.60	3.90			
		Manvathikulam	1	1	0.10	OS	40	1.20	1.30			
		Total	6	6.0	0.60		250	7.50	8.10	0.23	8.33	
24	Package - 24	Porankulam	3	3	0.30	OS	120	3.60	3.90			
		Villiyakulam	2	2	0.20	OS	80	2.40	2.60			
		Kayankottaikulam	2	2	0.20	OS	80	2.40	2.60			
		Total	7	7	0.70		280.00	8.40	9.10	0.25	9.35	
25	Package - 25	Nemmelikulam	2	2	0.20	OS	80	2.40	2.60			
		Kachirankulam	2	2	0.20	OS	90	2.70	2.90			
		Chettikulam	2	2	0.20	OS	90	2.70	2.90			
		Total	6	6	0.6000		260	7.80	8.40	0.24	8.64	
26	Package - 26	Muthusasthrikulam	4	4	0.40	OS	180	5.40	5.80			
		Malaiyadikulam	4	4	0.40	OS	180	5.40	5.80			
		Total	8	8	0.8000		360	10.80	11.60	0.32	11.92	
Sub Total			251	251	25.10		8660	259.80	284.90			

Sl.No. (1)	Package No.(2)	Name of Tank(3)	No. of Sluices(4)	Flow Measuring Device		Lining in Head Irrigation Channel			Amount in Lakhs(10)	L.S.Provision @2.80%(11)	Grand Total(12)	Remarks(13)
				No (5)	Amount in Lakhs (6)	Type of Soil BC/OS* (7)	Length in metre (8)	Amount in Lakhs (9)				
B/F			251	251	25.10		8660	259.80	284.90			
27	Package - 27	Anthonikulam	2	2	0.20	OS	90	2.70	2.90			
		Kallakottai Pudukkulam	7	7	0.70	OS	280	8.40	9.10			
		Total	9	9	0.90		370	11.10	12.00	0.34	12.34	
28	Package - 28	Sengamviduthi -Pudukkulam	3	3	0.30	OS	135	4.05	4.35			
		Karuperikulam	2	2	0.20	OS	90	2.70	2.90			
		Total	5	5	0.50		225	6.75	7.25	0.20	7.45	
29	Package - 29	Tholakulam	3	3	0.30	OS	120	3.60	3.90			
		Athikudykulam	5	5	0.50	OS	150	4.50	5.00			
		Periya Elumbikulam	3	3	0.30	OS	90	2.70	3.00			
		Total	11	11	1.10		360	10.80	11.90	0.33	12.23	
30	Package - 30	Avankaliyarankulam	3	3	0.30	OS	120	3.60	3.90			
		Periyakulam	7	7	0.70	OS	245	7.35	8.05			
		Total	10	10	1.00		365	10.95	11.95	0.33	12.28	

31	Package - 31	Kadayakudikulam	1	1	0.10	OS	45	1.35	1.45			
		Elangulam	2	2	0.20	OS	90	2.70	2.90			
		Neduvakulam	4	4	0.40	OS	180	5.40	5.80			
		Total	7	7	0.70		315	9.45	10.15	0.28	10.43	
32	Package - 32	Neduvakulam	3	3	0.30	OS	135	4.05	4.35			
		Thennankudy kulam	1	1	0.10	OS	45	1.35	1.45			
		Total	4	4	0.40		180	5.40	5.80	0.16	5.96	
33	Package - 33	Karaikulam	5	5	0.50	OS	225	6.75	7.25			
		Theruku Saranikulam	2	2	0.20	OS	90	2.70	2.90			
		Total	7	7	0.70		315	9.45	10.15	0.28	10.43	
Sub Total			304	304	30.40		10790	323.70	354.10			
Sl.No. (1)	Package No.(2)	Name of Tank(3)	No. of Sluices(4)	Flow Measuring Device		Lining in Head Irrigation Channel			Amount in Lakhs(10)	L.S.Provision @2.80%(11)	Grand Total(12)	Remarks(13)
				No (5)	Amount in Lakhs (6)	Type of Soil BC/OS* (7)	Length in metre (8)	Amount in Lakhs (9)				
B/F			304	304	30.40		10790	323.70	354.10			
34	Package - 34	Seeganodaikulam	3	3	0.30	OS	120	3.60	3.90			
		Muthukaraikulam	2	2	0.20	OS	80	2.40	2.60			
		Vettakudykulam	3	3	0.30	OS	120	3.60	3.90			
		Total	8	8	0.80		320	9.60	10.40	0.29	10.69	

35	Package - 35	Naickarpatti Pudu Eri										
		Vadakkusaranikulam	2	2	0.20	OS	80	2.40	2.60			
		Maniyakulam	6	6	0.60	OS	240	7.20	7.80			
		Total	8	8	0.80		320	9.60	10.40	0.29	10.69	
36	Package - 36	Rettai Eri	2	2	0.20	OS	90	2.70	2.90			
		Therkkupiramikulam	2	2	0.20	OS	90	2.70	2.90			
		Total	4	4	0.40		180	5.40	5.80	0.16	5.96	
37	Package - 37	Pappan Eri	2	2	0.20	OS	90	2.70	2.90			
		Theruku Adiyamoorthikulam	3	3	0.30	OS	135	4.05	4.35			
		Total	5	5	0.50		225	6.75	7.25	0.20	7.45	
38	Package - 38	Periya Eri - Manganoor	7	7	0.70	OS	210	6.30	7.00			
		Mangalakulam	4	4	0.40	OS	140	4.20	4.60			
		Total	11	11	1.10		350	10.50	11.60	0.32	11.92	
39	Package - 39	Periya Eri-Meikudypatty	5	5	0.50	OS	225	6.75	7.25			
		Total	5	5	0.50		225	6.75	7.25	0.20	7.45	
40	Package - 40	Pisanathur Periya Eri										
		Konanchikulam	2	2	0.20	OS	100	3.00	3.20			
		Total	2	2	0.20		100	3.00	3.20	0.09	3.29	
41	Package - 41	Naval Eri	5	5	0.50	OS	225	6.75	7.25			
		Mattangal Periya Eri										
		Total	5	5	0.50		225	6.75	7.25	0.20	7.45	
Sub Total			352	352	35.20		12735	382.05	417.25			

Sl.No. (1)	Package No.(2)	Name of Tank(3)	No. of Sluices(4)	Flow Measuring Device		Lining in Head Irrigation Channel			Amount in Lakhs(10)	L.S.Provision @2.80%(11)	Grand Total(12)	Remarks(13)
				No (5)	Amount in Lakhs (6)	Type of Soil BC/OS* (7)	Length in metre (8)	Amount in Lakhs (9)				
B/F			352	352	35.20		12735	382.05	417.25			
42	Package - 42	KattunavalPeriya Eri	6	6	0.60	OS	270	8.10	8.70			
		Total	6	6	0.60		270	8.10	8.70	0.24	8.94	
43	Package - 43	SundampattyPudukkulam	4	4	0.40	OS	180	5.40	5.80			
		Total	4	4	0.40		180	5.40	5.80	0.16	5.96	
44	Package - 44	Muthaladaippukulam	3	3	0.30	OS	135	4.05	4.35			
		Thilai odai Tank										
		Total	3	3	0.30		135	4.05	4.35	0.12	4.47	
45	Package - 45	Thuvar Big Tank	2	2	0.20	OS	60	1.80	2.00			
		Thuvar Siru Eri	3	3	0.30	OS	90	2.70	3.00			
		Petharikulam	1	1	0.10	OS	30	0.90	1.00			
		Pudukkulam	2	2	0.20	OS	60	1.80	2.00			
		Sithamallikulam	3	3	0.30	OS	60	1.80	2.10			
		Puniyakulam	2	2	0.20	OS	60	1.80	2.00			
		Total	13	13	1.30		360	10.80	12.10	0.34	12.44	

46	Package - 46	Neppiar Urani	2	2	0.20	OS	60	1.80	2.00			
		Ramasampillaikulam	2	2	0.20	OS	60	1.80	2.00			
		Pannappankulam	3	3	0.30	OS	90	2.70	3.00			
		Adiyarkulam	1	1	0.10	OS	30	0.90	1.00			
		Thirumanancheri Periyakulam	3	3	0.30	OS	60	1.80	2.10			
		Kaliyandikulam	2	2	0.20	OS	60	1.80	2.00			
		Total	13	13	1.30		360	10.80	12.10	0.34	12.44	
Sub Total			391	391	39.10		14040	421.20	460.30			
Sl.No. (1)	Package No.(2)	Name of Tank(3)	No. of Sluices(4)	Flow Measuring Device		Lining in Head Irrigation Channel			Amount in Lakhs(10)	L.S.Provision @2.80%(11)	Grand Total(12)	Remarks(13)
				No (5)	Amount in Lakhs (6)	Type of Soil BC/OS* (7)	Length in metre (8)	Amount in Lakhs (9)				
B/F			391	391	39.10		14040	421.20	460.30			
47	Package - 47	Keecharodaikulam	3	3	0.30	OS	90	2.70	3.00			
		Mankottaikulam	4	4	0.40	OS	80	2.40	2.80			
		Karambakudi Periyakulam										
		Pethalerikulam	2	2	0.20	OS	60	1.80	2.00			
		Valakulam	2	2	0.20	OS	60	1.80	2.00			
		Malaiyakulam	2	2	0.20	OS	60	1.80	2.00			
		Total	13	13	1.30		350	10.50	11.80	0.33	12.13	

48	Package - 48	Surakkattu Pudukulam	3	3	0.30	OS	45	1.35	1.65				
		Chinnapudaiyankulam	1	1	0.10	OS	20	0.60	0.70				
		Neppankulam	4	4	0.40	OS	60	1.80	2.20				
		Sammatikulam	3	3	0.30	OS	45	1.35	1.65				
		Kavakulam	3	3	0.30	OS	45	1.35	1.65				
		Ramachandrakulam	2	2	0.20	OS	30	0.90	1.10				
		Nallandankulam	3	3	0.30	OS	45	1.35	1.65				
		Panayakulam	2	2	0.20	OS	40	1.20	1.40				
		Total	21	21	2.10		330	9.90	12.00	0.34	12.34		
49	Package - 49	Naiyakarambaikulam	3	3	0.30	OS	60	1.80	2.10				
		Periyapiramikulam	3	3	0.30	OS	60	1.80	2.10				
		Chinnapiaramikulam	2	2	0.20	OS	40	1.20	1.40				
		Karaikudi Neduudaiyan Kulam	4	4	0.40	OS	60	1.80	2.20				
		Kurumbikulam	3	3	0.30	OS	60	1.80	2.10				
		Vembakudikulam	2	2	0.20	OS	40	1.20	1.40				
		Muthanerikulam	1	1	0.10	OS	20	0.60	0.70				
		Total	18	18	1.80		340	10.20	12.00	0.34	12.34		
Sub Total			443	443	44.30		15060	451.80	496.10				

Sl.No. (1)	Package No.(2)	Name of Tank(3)	No. of Sluices(4)	Flow Measuring Device		Lining in Head Irrigation Channel			Amount in Lakhs(10)	L.S.Provision @2.80%(11)	Grand Total(12)	Remarks(13)
				No (5)	Amount in Lakhs (6)	Type of Soil BC/OS* (7)	Length in metre (8)	Amount in Lakhs (9)				
B/F			443	443	44.30		15060	451.80	496.10			
50	Package - 50	Mappillaiya Pudukulam	1	1	0.10	OS	40	1.20	1.30			
		Kovakulam	2	2	0.20	OS	80	2.40	2.60			
		Petharikulam	2	2	0.20	OS	80	2.40	2.60			
		Samuthattikulam	2	2	0.20	OS	80	2.40	2.60			
		Pappankulam	2	2	0.20	OS	80	2.40	2.60			
		Total	9	9	0.90		360	10.80	11.70	0.33	12.03	
51	Package - 51	Kumarakulam - Thennathirayankulam	8	8	0.80	OS	360	10.80	11.60			
		Total	8	8	0.80		360	10.80	11.60	0.32	11.92	
52	Package - 52	Periyakulam -Pudukulam	3	3	0.30	OS	90	2.70	3.00			
		Aachikulam	2	2	0.20	OS	60	1.80	2.00			
		Pudukkulam	1	1	0.10	OS	30	0.90	1.00			
		Vadakku Piramikulam	2	2	0.20	OS	60	1.80	2.00			
		Pidarikulam	3	3	0.30	OS	120	3.60	3.90			
		Total	11	11	1.10		360	10.80	11.90	0.33	12.23	
53	Package -	Kurichi Eri	9	9	0.90	OS	360	10.80	11.70			

	53	Total	9	9	0.90		360	10.80	11.70	0.33	12.03	
54	Package - 54	Eduthanivayal	4	4	0.40	OS	180	5.40	5.80			
		Karuppanviduthi	2	2	0.20	OS	90	2.70	2.90			
		Total	6	6	0.60		270	8.10	8.70	0.24	8.94	
55	Package - 55	Pannavayal Eri	8	8	0.80	OS	360	10.80	11.60			
		Total	8	8	0.80		360	10.80	11.60	0.32	11.92	
56	Package - 56	Periya therkku vadakku Eri	4	4	0.40	OS	140	4.20	4.60			
		Koothaadvayal	4	4	0.40	OS	120	3.60	4.00			
		Manalkulam	3	3	0.30	OS	105	3.15	3.45			
		Total	11	11	1.10		365	10.95	12.05	0.34	12.39	
Sub Total			505	505	50.50		17495	524.85	575.35			
Sl.No. (1)	Package No.(2)	Name of Tank(3)	No. of Sluices(4)	Flow Measuring Device		Lining in Head Irrigation Channel			Amount in Lakhs(10)	L.S.Provision @2.80%(11)	Grand Total(12)	Remarks(13)
				No (5)	Amount in Lakhs (6)	Type of Soil BC/OS* (7)	Length in metre (8)	Amount in Lakhs (9)				
B/F			505	505	50.50		17495	524.85	575.35			
57	Package - 57	Chettikulam & Salakulam	2	2	0.20	OS	90	2.70	2.90			
		Valasamudram	3	3	0.30	OS	120	3.60	3.90			
		Nambivayal Chittheri	4	4	0.40	OS	160	4.80	5.20			
		Total	9	9	0.90		370	11.10	12.00	0.34	12.34	
58	Package - 58	Punavasal	3	3	0.30	OS	120	3.60	3.90			
		Perandakulam	3	3	0.30	OS	120	3.60	3.90			

		Total	6	6	0.60		240	7.20	7.80	0.22	8.02	
59	Package - 59	Neyveli Periya Eri	6	6	0.60	OS	270	8.10	8.70			
		Total	6	6	0.60		270	8.10	8.70	0.24	8.94	
60	Package - 60	Sevanikkankulam	4	4	0.40	OS	160	4.80	5.20			
		Nochikulam (Chokanathapuram)	3	3	0.30	OS	120	3.60	3.90			
		Maruthangavayal	3	3	0.30	OS	90	2.70	3.00			
		Total	10	10	1.00		370	11.10	12.10	0.34	12.44	
61	Package - 61	Kudalivayal Tank	6	6	0.60	OS	300	9.00	9.60			
		Total	6	6	0.60		300	9.00	9.60	0.27	9.87	
62	Package - 62	Kannudaiyan Eri	3	3	0.30	OS	90	2.70	3.00			
		Andikulam	3	3	0.30	OS	75	2.25	2.55			
		Pallathur	4	4	0.40	OS	80	2.40	2.80			
		Odayankudi Eri	5	5	0.50	OS	100	3.00	3.50			
		Total	15	15	1.50		345	10.35	11.85	0.33	12.18	
63	Package - 63	Velivayal	7	7	0.70	OS	210	6.30	7.00			
		Total	7	7	0.70		210	6.30	7.00	0.20	7.20	
64	Package - 64	Karugavayal Tank	11	11	1.10	OS	330	9.90	11.00			
		Total	11	11	1.10		330	9.90	11.00	0.31	11.31	
65	Package - 65	Sendakkottai Eri	11	11	1.10	OS	330	9.90	11.00			
		Total	11	11	1.10		330	9.90	11.00	0.31	11.31	
Sub Total			586	586	58.60		20260	607.80	666.40			

Sl.No. (1)	Package No.(2)	Name of Tank(3)	No. of Sluices(4)	Flow Measuring Device		Lining in Head Irrigation Channel			Amount in Lakhs(10)	L.S.Provision @2.80%(11)	Grand Total(12)	Remarks(13)
				No (5)	Amount in Lakhs (6)	Type of Soil BC/OS* (7)	Length in metre (8)	Amount in Lakhs (9)				
B/F			586	586	58.60		20260	607.80	666.40			
66	Package - 66	Eripurakkarai Eri	7	7	0.70	OS	210	6.30	7.00			
		Total	7	7	0.70		210	6.30	7.00	0.20	7.20	
67	Package - 67	Keelapura Tank	2	2	0.20	OS	63.2	1.90	2.10			
		Melapura Tank	3	3	0.30	OS	90	2.70	3.00			
		Nochikulam (Rajamadam)	3	3	0.30	OS	90	2.70	3.00			
		Total	8	8	0.80		243	7.30	8.10	0.23	8.32	
Sub Total			601	601	60.10		20713	621.40	681.50	19.08	700.58	
Grand Total			601	601	60.10		20713	621.40	681.50	19.08	700.58	

Certified that the Tanks included in the originally approved DPR of Agniyar Sub Basin alone are considered now.

Certified that the above works have not been taken up in any other Project

Certified that the Field/Irrigation Channel drawing type I is adopted in 190 number of tanks having soil other than block cotton soil

Certified that the Field /Irrigation channel drawing type II is adopted in Nil number of tanks having black cotton soil

FORMAT - II

NAME OF THE REGION TRICHY
 NAME OF CIRCLE LOWER CAUVERY BASIN CIRCLE, THANJAVUR
 NAME OF DIVISION AGNIYAR BASIN DIVISION,PATTUKKOTTAL.
 NAME OF SUB BASIN AGNIYAR SUB BASIN

TOTAL NUMBER OF TANKS
 TAKEN UP UNDER IAMWARM 190

METHOD OF PROCUREMENT NATIONAL SHOPPING

(NOTE Procurement plan to be got approved by World Bank separately)

PACKAGE WISE ABSTRACT

SL. No	PACKAGE No	DESCRIPTION	NO.OF TANK	NO . OF FLOW MESURING DEVICE	TOTAL LENGTH OF LINING IN HEAD IRRIGATION CHANNELS	AMOUNT (IN LAKH)	REMARKS
1	01/IAMWARM/WRO/AGR/WORKS/2011-12	Lining of Head Irrigation channel & Providing flow measuring devices for Keelakaikudykulam Odugankulam & Semathikulam in Agniyar Sub Basin of Pudukkottai District.	3	12	360	12.34	
2	02/IAMWARM/WRO/AGR/WORKS/2011-12	Lining of Head Irrigation channel & Providing flow measuring devices for Nanjure Periyakulam Periyamaruthankulam & Periyakulam Agniyar Sub Basin of Pudukkottai District.	3	8	320	10.69	

3	03/IAMWARM/WRO/ AGR/WORKS/2011-12	Lining of Head Irrigation channel & Providing flow measuring devices for Mosakudy Periyakulam, Malaiyettankulam, Alagikulam, Kilukilupaikulam & Kulathur Periyakulam in Agniyar Sub Basin of Pudukkottai District.	3	12	360	12.34	
4	04/IAMWARM/WRO/ AGR/WORKS/2011-12	Lining of Head Irrigation channel & Providing flow measuring devices for Keeranur Periyakulam Periya Alathikulam & Periya Alathikulam in Agniyar Sub Basin of Pudukkottai District.	3	7	350	11.51	
5	05/IAMWARM/WRO/ AGR/WORKS/2011-12	Lining of Head Irrigation channel & Providing flow measuring devices for Annikulam, Odukur Periyakulam, Villathykulam, Karupaddykulam & Kusavankulam in Agniyar Sub Basin of Pudukkottai District.	3	11	355	12.08	
		C/O	15	50	1745	58.96	
SL.No	PACKAGE No	DESCRIPTION	NO.OFTANK	NO . OF FLOW MESURING DEVICE	TOTAL LENGTH OF LININIG IN HEAD IRRIGATION CHANNELS	AMOUNT(IN LAKH)	REMARKS
		B/F	15	50	1745	58.96	
6	06/IAMWARM/WRO/ AGR/WORKS/2011-12	Lining of Head Irrigation channel & Providing flow measuring devices for Oorakulam, Kalankulam, Alankulam, Sittukulam, Kalakudykulam, Nanaganachikulam & Passipatty Periyakulam in Agniyar Sub Basin of Pudukkottai District.	3	15	340	12.03	

7	07/IAMWARM/WRO/ AGR/WORKS/2011-12	Lining of Head Irrigation channel & Providing flow measuring devices for Tayani kulam, Illupaikulam & Valamangalam Periyakulam in Agniyar Sub Basin of Pudukkottai District.	3	10	360	12.13	
8	08/IAMWARM/WRO/ AGR/WORKS/2011-12	Lining of Head Irrigation channel & Providing flow measuring devices for Thinnanikulam, Mattanikulam, Periyakulam, Thanerikulam, Ponnerikulam, Koothadikulam & Mekkudikulam in Agniyar Sub Basin of Pudukkottai District.	3	9	360	12.03	
9	09/IAMWARM/WRO/ AGR/WORKS/2011-12	Lining of Head Irrigation channel & Providing flow measuring devices for Neduncherikulam, Maruthaakulam, Naduvikulam, Kulamuthikulam & Kalankulam in Agniyar Sub Basin of Pudukkottai District.	3	9	360	12.03	
10	10/IAMWARM/WRO/ AGR/WORKS/2011-12	Lining of Head Irrigation channel & Providing flow measuring devices for Alankulam, Peykulam, Melikulam, Melur Periyakulam & Printhaikulam in Agniyar Sub Basin of Pudukkottai District.	3	8	320	10.69	
11	11/IAMWARM/WRO/ AGR/WORKS/2011-12	Lining of Head Irrigation channel & Providing flow measuring devices for Vellanikulam, Periyasengulam, Chinasengulam, Senayakudi Periyakulam & Killanikulam in Agniyar Sub Basin of Pudukkottai District.	4	11	360	12.23	
12	12/IAMWARM/WRO/ AGR/WORKS/2011-12	Lining of Head Irrigation channel & Providing flow measuring devices for Seerakulam & Perakulam in Agniyar Sub Basin of Pudukkottai District.	2	10	300	10.28	
		C/O	36	122	4145	140.37	

SL.No	PACKAGE No	DESCRIPTION	NO.OFTANK	NO . OF FLOW MESURING DEVICE	TOTAL LENGTH OF LINING IN HEAD IRRIGATION CHANNELS	AMOUNT(IN LAKH)	REMARKS
		B/F	36	122	4145	140.373	
13	13/IAMWARM/WRO/AGR/WORKS/2011-12	Lining of Head Irrigation channel & Providing flow measuring devices for Kumaramuthankulam, Kovilveerakudikanmoi, Thiruppakulam, Velankulam, Pudukulam & Vathanakurichi Periyakulam in Agniyar Sub Basin of Pudukkottai District.	4	10	335	11.36	
14	14/IAMWARM/WRO/AGR/WORKS/2011-12	Lining of Head Irrigation channel & Providing flow measuring devices for Muthukadu Priyakulam, Eraiyakulam Sathinikulam & Thennankudi Periyakulam in Agniyar Sub Basin of Pudukkottai District.	4	10	350	11.82	
15	15/IAMWARM/WRO/AGR/WORKS/2011-12	Lining of Head Irrigation channel & Providing flow measuring devices for Aranikulam, Poongudikulam & Ammankulam in Agniyar Sub Basin of Pudukkottai District.	3	11	340	11.62	
16	16/IAMWARM/WRO/AGR/WORKS/2011-12	Lining of Head Irrigation channel & Providing flow measuring devices for Periyakulam, Thethikulam, Kuttaikulam, Periyakulam, Sudalaikulam, Chettikulam & Pothiyakulam in Agniyar Sub Basin of Pudukkottai District.	4	13	350	12.13	

17	17/IAMWARM/WRO/AGR/WORKS/2011-12	Lining of Head Irrigation channel & Providing flow measuring devices for Minnadikulam, Mottankulam, Ottavikulam, Vaithikulam & Chinnatharappakulam in Agniyar Sub Basin of Pudukkottai District.	4	13	350	12.13	
18	18/IAMWARM/WRO/AGR/WORKS/2011-12	Lining of Head Irrigation channel & Providing flow measuring devices for Periyatharappakulam, Palumuthikulam & Poondikulam in Agniyar Sub Basin of Pudukkottai District.	3	12	360	12.34	
19	19/IAMWARM/WRO/AGR/WORKS/2011-12	Lining of Head Irrigation channel & Providing flow measuring devices for Kuruvankulam, Kalimuthikulam & Pungankulam in Agniyar Sub Basin of Pudukkottai District.	3	6	240	8.02	
		C/O	61	197	6470	219.79	
SL.No	PACKAGE No	DESCRIPTION	NO.OFTANK	NO . OF FLOW MESURING DEVICE	TOTAL LENGTH OF LINING IN HEAD IRRIGATION CHANNELS	AMOUNT(IN LAKH)	REMARKS
		B/F	61	197	6470	219.79	
20	20/IAMWARM/WRO/AGR/WORKS/2011-12	Lining of Head Irrigation channel & Providing flow measuring devices for Melavella kulam, Keelavellakulam & Varappur Periyakulam in Agniyar Sub Basin of Pudukkottai District.	3	9	360	12.03	

21	21/IAMWARM/WRO/ AGR/WORKS/2011-12	Lining of Head Irrigation channel & Providing flow measuring devices for Sempattur Periyakulam, Vagavasal Periyakulam & Pasukulam in Agniyar Sub Basin of Pudukkottai District.	3	10	360	12.13	
22	22/IAMWARM/WRO/ AGR/WORKS/2011-12	Lining of Head Irrigation channel & Providing flow measuring devices for Pallavankulam, Harikulam & Sirukulam in Agniyar Sub Basin of Pudukkottai District.	2	8	320	10.69	
23	23/IAMWARM/WRO/ AGR/WORKS/2011-12	Lining of Head Irrigation channel & Providing flow measuring devices for Sirukakulam, Perungakulam & Manavathikulam in Agniyar Sub Basin of Pudukkottai District.	3	6	250	8.33	
24	24/IAMWARM/WRO/ AGR/WORKS/2011-12	Lining of Head Irrigation channel & Providing flow measuring devices for Porankulam, Villiyakulam & Kayankottaikulam in Agniyar Sub Basin of Pudukkottai District.	3	7	280	9.35	
25	25/IAMWARM/WRO/ AGR/WORKS/2011-12	Lining of Head Irrigation channel & Providing flow measuring devices for Nemmelikulam, Kachirankulam & Chettikulam in Agniyar Sub Basin of Pudukkottai District.	3	6	260	8.64	
26	26/IAMWARM/WRO/ AGR/WORKS/2011-12	Lining of Head Irrigation channel & Providing flow measuring devices for Muthusathrikulam & Malayadikulam Tanks in Agniyar Sub Basin of Pudukkottai District.	2	8	360	11.92	
27	27/IAMWARM/WRO/ AGR/WORKS/2011-12	Lining of Head Irrigation channel & Providing flow measuring devices for Anthonikulam & Kallakkottai Pudukulam in Agniyar Sub Basin of Pudukkottai District.	2	9	370	12.34	

28	28/IAMWARM/WRO/ AGR/WORKS/2011-12	Lining of Head Irrigation channel & Providing flow measuring devices for Sengamviduthi Pudukkulam Karuperikulam in Agniyar Sub Basin of Pudukkottai District.	2	5	225	7.45	
		C/O	84	265	9255	312.67	
SL.No	PACKAGE No	DESCRIPTION	NO.OFTANK	NO . OF FLOW MESURING DEVICE	TOTAL LENGTH OF LINING IN HEAD IRRIGATION CHANNELS	AMOUNT(IN LAKH)	REMARKS
		B/F	84	265	9255	312.67	
29	29/IAMWARM/WRO/ AGR/WORKS/2011-12	Lining of Head Irrigation channel & Providing flow measuring devices for Tholakulam, Athikudykulam & Periya Elumbikulam in Agniyar Sub Basin of Pudukkottai District.	3	11	360	12.23	
30	30/IAMWARM/WRO/ AGR/WORKS/2011-12	Lining of Head Irrigation channel & Providing flow measuring devices for Avankaliyarankulam & Periyakulam in Agniyar Sub Basin of Pudukkottai District.	2	10	365	12.28	
31	31/IAMWARM/WRO/ AGR/WORKS/2011-12	Lining of Head Irrigation channel & Providing flow measuring devices for Kadayakudikulam,Elangulam & Neduvakulam in Agniyar Sub Basin of Pudukkottai District.	3	7	315	10.43	

32	32/IAMWARM/WRO/ AGR/WORKS/2011-12	Lining of Head Irrigation channel & Providing flow measuring devices for Neduvakulam & Thennankudy kulam in Agniyar Sub Basin of Pudukkottai District.	2	4	180	5.96	
33	33/IAMWARM/WRO/ AGR/WORKS/2011-12	Lining of Head Irrigation channel & Providing flow measuring devices for Karaikulam & Theruku Saranikulam in Agniyar Sub Basin of Pudukkottai District.	2	7	315	10.43	
34	34/IAMWARM/WRO/ AGR/WORKS/2011-12	Lining of Head Irrigation channel & Providing flow measuring devices for Seeganodaikulam, Muthukaraikulam & Vettakudikulam in Agniyar Sub Basin of Pudukkottai District.	3	8	320	10.69	
35	35/IAMWARM/WRO/ AGR/WORKS/2011-12	Lining of Head Irrigation channel & Providing flow measuring devices for Naickarpatti Pudu Eri, Vadakkusaranikulam & Maniyakulam in Agniyar Sub Basin of Pudukkottai District.	3	8	320	10.69	
36	36/IAMWARM/WRO/ AGR/WORKS/2011-12	Lining of Head Irrigation channel & Providing flow measuring devices for Rettai Eri & Therkkupiramikulam in Agniyar Sub Basin of Pudukkottai District.	2	4	180	5.96	
		C/O	104	324	11610	391.36	

SL.No	PACKAGE No	DESCRIPTION	NO.OFTANK	NO . OF FLOW MESURING DEVICE	TOTAL LENGTH OF LININIG IN HEAD IRRIGATI ON CHANNEL S	AMOUNT(IN LAKH)	REMAR KS
		B/F	104	324	11610	391.36	
37	37/IAMWARM/WRO/AGR/WORKS/2011-12	Lining of Head Irrigation channel & Providing flow measuring devices for Pappan Eri & Theruku Adiyamoorthikulam in Agniyar Sub Basin of Pudukkottai District.	2	5	225	7.45	
38	38/IAMWARM/WRO/AGR/WORKS/2011-12	Lining of Head Irrigation channel & Providing flow measuring devices for Manganoor Periya Eri & Mangalakulam in Agniyar Sub Basin of Pudukkottai District.	2	11	350	11.92	
39	39/IAMWARM/WRO/AGR/WORKS/2011-12	Lining of Head Irrigation channel & Providing flow measuring devices for Meikudypatty Periya Eri tank in Agniyar Sub Basin of Pudukkottai District.	1	5	225	7.45	
40	40/IAMWARM/WRO/AGR/WORKS/2011-12	Lining of Head Irrigation channel & Providing flow measuring devices for Pisanathur Periya Eri & Konanchikulam in Agniyar Sub Basin of Pudukkottai District.	2	2	100	3.29	
41	41/IAMWARM/WRO/AGR/WORKS/2011-12	Lining of Head Irrigation channel & Providing flow measuring devices for Naval Eri & Mattangal Periyakulam in Agniyar Sub Basin of Pudukkottai District.	2	5	225	7.45	

42	42/IAMWARM/WRO/ AGR/WORKS/2011-12	Lining of Head Irrigation channel & Providing flow measuring devices for Kattunaval Periya Eri in Agniyar Sub Basin of Pudukkottai District.	1	6	270	8.94	
43	43/IAMWARM/WRO/ AGR/WORKS/2011-12	Lining of Head Irrigation channel & Providing flow measuring devices for Sunthampatti Pudukulam in Agniyar Sub Basin of Pudukkottai District.	1	4	180	5.96	
44	44/IAMWARM/WRO/ AGR/WORKS/2011-12	Lining of Head Irrigation channel & Providing flow measuring devices for Muthadaippukulam & Thillaiodai Tank in Agniyar Sub Basin of Pudukkottai District.	2	3	135	4.47	
		C/O	117	365	13320	448.31	
SL.No	PACKAGE No	DESCRIPTION	NO.OFTA NK	NO . OF FLOW MESURIN G DEVICE	TOTAL LENGTH OF LININIG IN HEAD IRRIGATI ON CHANNEL S	AMOUNT(IN LAKH)	REMAR KS
		B/F	117	365	13320	448.31	
45	45/IAMWARM/WRO/ AGR/WORKS/2011-12	Lining of Head Irrigation channel & Providing flow measuring devices for Thuvar Big Tank, Thuvar Siru Eri, Petharikulam, Pudukulam, Sithamallikulam & Puniyakulam in Agniyar Sub Basin of Pudukkottai District.	6	13	360	12.44	

46	46/IAMWARM/WRO/ AGR/WORKS/2011-12	Lining of Head Irrigation channel & Providing flow measuring devices for Neppiar Urani, Ramasampillaikulam, Pannappankulam, Adiyarkulam, Thirumanancheri Periyakulam & Kaliyandikulam in Agniyar Sub Basin of Pudukkottai District.	6	13	360	12.44	
47	47/IAMWARM/WRO/ AGR/WORKS/2011-12	Lining of Head Irrigation channel & Providing flow measuring devices for Keecharodaikulam, Mankottaikulam, Karambakudi Periyakulam, Pethalerikulam, Valakulam & Malaiyakulam in Agniyar Sub Basin of Pudukkottai District.	6	13	350	12.13	
48	48/IAMWARM/WRO/ AGR/WORKS/2011-12	Lining of Head Irrigation channel & Providing flow measuring devices for Surakkattu Pudukulam, Chinnapudaiyankulam, Neppankulam, Sammatikulam, Kavakulam, Ramachandrakulam, Nallandankulam & Panayakulam in Agniyar Sub Basin of Pudukkottai District.	8	21	330	12.34	
49	49/IAMWARM/WRO/ AGR/WORKS/2011-12	Lining of Head Irrigation channel & Providing flow measuring devices for Naiyakarambaikulam, Periyapiramikulam, Chinnapiaramikulam, Karaikudi Neduudaiyan Kulam, Kurumbikulam, Vembakudikulam, & Muthanerikulam in Agniyar Sub Basin of Pudukkottai District.	7	18	340	12.34	
50	50/IAMWARM/WRO/ AGR/WORKS/2011-12	Lining of Head Irrigation channel & Providing flow measuring devices for Mappillaiya Pudukulam, Kovakulam, Petharikulam, Samuthattikulam, & Pappankulam in Agniyar Sub Basin of Pudukkottai District.	5	9	360	12.03	

51	51/IAMWARM/WRO/ AGR/WORKS/2011-12	Lining of Head Irrigation channel & Providing flow measuring devices for Kumarakulam & Thennathirayankulam in Agniyar Sub Basin of Pudukkottai District.	1	8	360	11.92	
		C/O	156	460	15780	533.94	
SL.No	PACKAGE No	DESCRIPTION	NO.OFTA NK	NO . OF FLOW MESURIN G DEVICE	TOTAL LENGTH OF LININIG IN HEAD IRRIGATI ON CHANNEL S	AMOUNT(IN LAKH)	REMAR KS
		B/F	156	460	15780	533.94	
52	52/IAMWARM/WRO/ AGR/WORKS/2011-12	Lining of Head Irrigation channel & Providing flow measuring devices for Periyakulam -Pudukulam, Achikulam, Pudukulam, Vaddaku Piramikulam & Pidarikulam in Agniyar Sub Basin of Pudukkottai District.	5	11	360	12.23	
53	53/IAMWARM/WRO/ AGR/WORKS/2011-12	Lining of Head Irrigation channel & Providing flow measuring devices for Kurichi Eri in Agniyar Sub Basin of Thanjavur District.	1	9	360	12.03	
54	54/IAMWARM/WRO/ AGR/WORKS/2011-12	Lining of Head Irrigation channel & Providing flow measuring devices for Eduthanivayal Eri & Karuppanviduthi Eri in Agniyar Sub Basin of Thanjavur District.	2	6	270	8.94	
55	55/IAMWARM/WRO/ AGR/WORKS/2011-12	Lining of Head Irrigation channel & Providing flow measuring devices for Pannavayal Eri in Agniyar Sub Basin of Thanjavur District.	1	8	360	11.92	

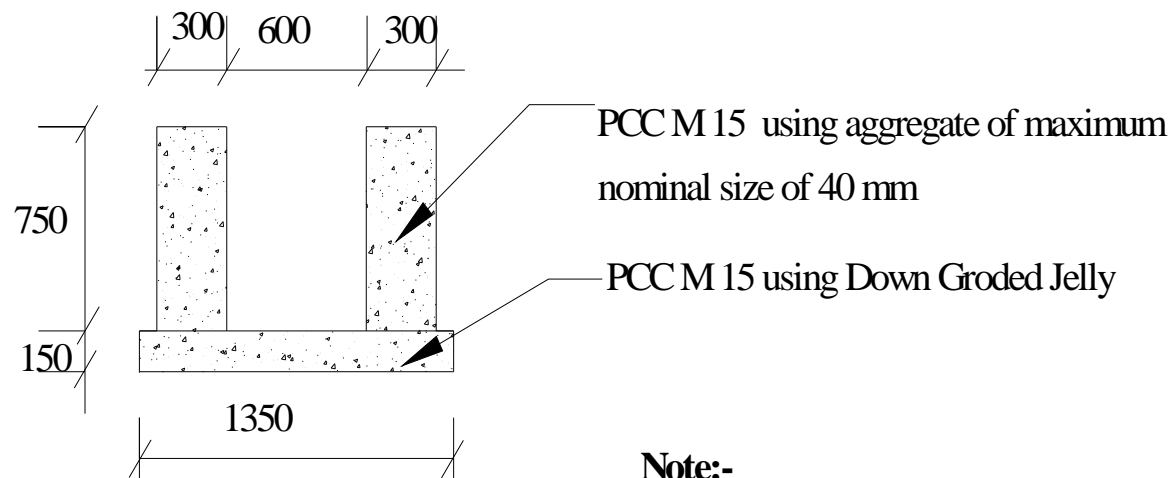
56	56/IAMWARM/WRO/ AGR/WORKS/2011-12	Lining of Head Irrigation channel & Providing flow measuring devices for Periyatherkkuvadakku Eri, Koothdivayal & Manalkulam in Agniyar Sub Basin of Thanjavur District.	3	11	365	12.39	
57	57/IAMWARM/WRO/ AGR/WORKS/2011-12	Lining of Head Irrigation channel & Providing flow measuring devices for Punavasal Chettikulam & Salakulam, Valasamuthiram & Nambivayal Chittheri in Agniyar Sub Basin of Thanjavur District.	3	9	370	12.34	
58	58/IAMWARM/WRO AGR/WORKS/2011-12	Lining of Head Irrigation channel & Providing flow measuring devices for Punavasal Periyakulam & Perandakulam in Agniyar Sub Basin of Thanjavur District.	2	6	240	8.02	
59	59/IAMWARM/WRO/ AGR/WORKS/2011-12	Lining of Head Irrigation channel & Providing flow measuring devices for Sevanikkankulam, Nochikulam (Chokkanathapuram) & Maruthangvayal Eri in Agniyar Sub Basin of Thanjavur District.	1	6	270	8.94	
60	60/IAMWARM/WRO/ AGR/WORKS/2011-12	Lining of Head Irrigation channel & Providing flow measuring devices for Kannudaiyan Eri, Pallathur Eri, Andikulam & Odaiyankudi Eri in Agniyar Sub Basin of Thanjavur District.	3	10	370	12.44	
		C/O	177	536	18745	633.20	
SL. No	PACKAGE No	DESCRIPTION	NO.OF TANK	NO . OF FLOW MESURIN G DEVICE	TOTAL LENGTH OF LININIG IN HEAD IRRIGATI ON CHANNEL S	AMOUNT (IN LAKH)	REMAR KS
		B/F	177	536	18745	633.20	

61	61/IAMWARM/WRO/ AGR/WORKS/2011-12	Lining of Head Irrigation channel & Providing flow measuring devices for Koodalivayal Tank in Agniyar Sub Basin of Thanjavur District.	1	6	300	9.87	
62	62/IAMWARM/WRO/ AGR/WORKS/2011-12	Lining of Head Irrigation channel & Providing flow measuring devices for Kannudaiyan Eri, Pallathur Eri, Andikulam & Odaiyankudi Eri in Agniyar Sub Basin of Thanjavur District.	4	15	345	12.18	
63	63/IAMWARM/WRO/ AGR/WORKS/2011-12	Lining of Head Irrigation channel & Providing flow measuring devices for Velivayal in Agniyar Sub Basin of Thanjavur District.	1	7	210	7.20	
64	64/IAMWARM/WRO/ AGR/WORKS/2011-12	Lining of Head Irrigation channel & Providing flow measuring devices for Kargavayal Tank in Agniyar Sub Basin of Thanjavur District.	1	11	330	11.31	
65	65/IAMWARM/WRO/ AGR/WORKS/2011-12	Lining of Head Irrigation channel & Providing flow measuring devices for Sendakkottai Eri Tank in Agniyar Sub Basin of Thanjavur District.	1	11	330	11.31	
66	66/IAMWARM/WRO/ AGR/WORKS/2011-12	Lining of Head Irrigation channel & Providing flow measuring devices for Eripurakkarai Eri Tank in Agniyar Sub Basin of Thanjavur District.	1	7	210	7.20	
67	67/IAMWARM/WRO/ AGR/WORKS/2011-12	Lining of Head Irrigation channel & Providing flow measuring devices for Keelapura Tank, Melapura Eri & Nochikulam (Rajamadam) for 2 Tanks in Agniyar Sub Basin of Thanjavur District.	3	8	243	8.32	
		TOTAL	190	601	20713	700.58	



AGNIYAR SUB BASIN
DRAWINGS

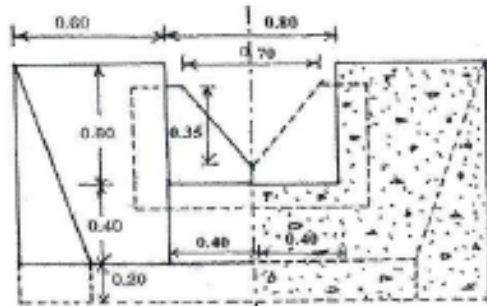
TYPICAL CROSS SECTION OF LINED IRRIGATION CHANNEL



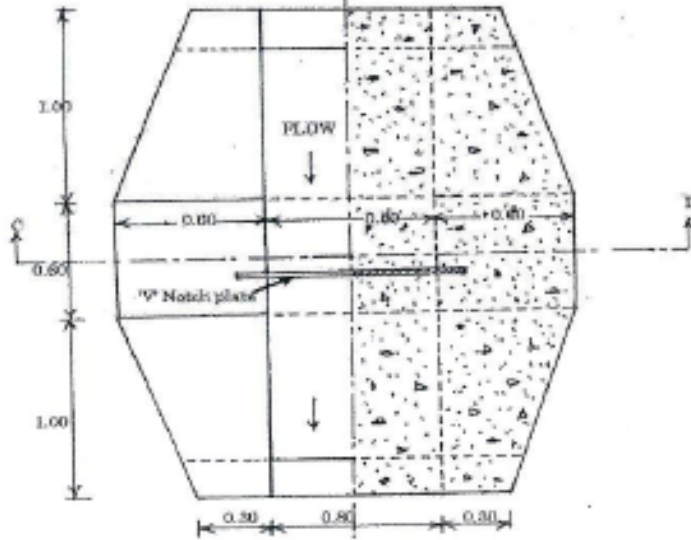
Note:-

Incase the site conditions necessitate increase the Channel section requisite modifications be made there -in duly ensuring the stability section

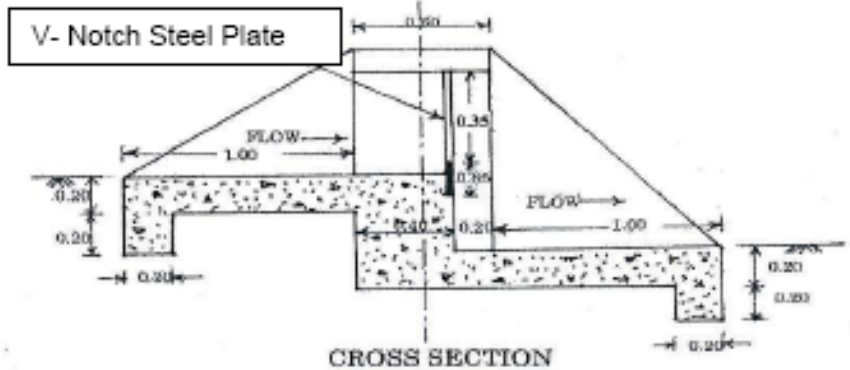
All Dimensions are in mm



HALF FRONT ELEVATION AND HALF SECTIONAL ELEVATION AT 'CD'



HALF PLAN AT TOP AND HALF PLAN AT BOTTOM



CROSS SECTION

V-Notch Steel Plate

TYPE - C
3 CRICK V-NOTCH

'V' -NOTCH - SALIENT DETAILS (For 1 to 4 C/s)

Cusec	Discharge		V' notch size Cm	Overall size Cm
	Litre / sec	Head Over Crest Cm		
1	28.3	20.5	25 x 50	50 x 85
2	56.6	27	30 x 60	60 x 75
3	85	32	35 x 70	55 x 90
4	113.27	36	42 x 84	60 x 100

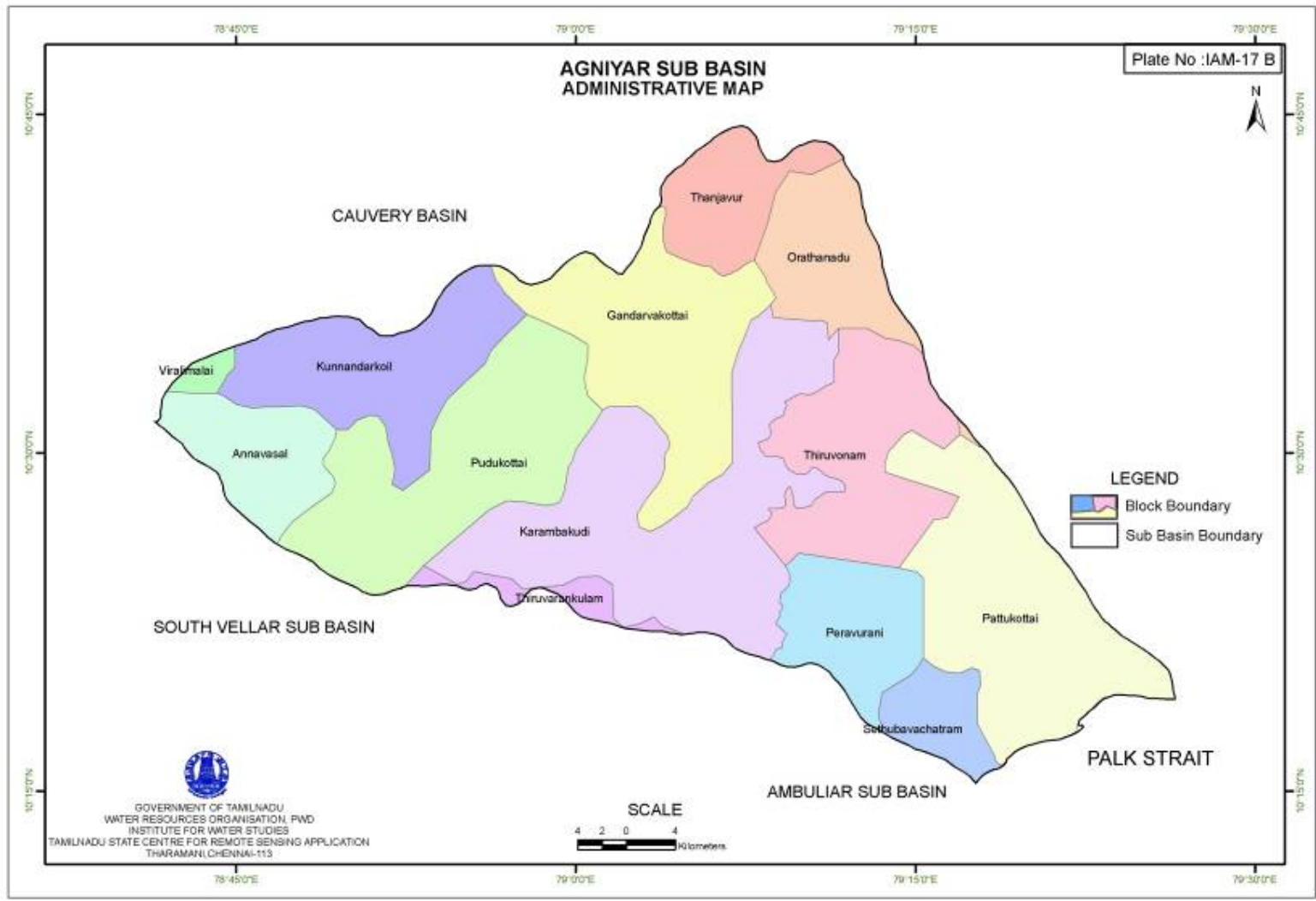
TYPICAL SKTECH FOR
PROVIDING MEASURING DEVICE
IN THE SLUICES FOR AGNIYAR
SUB BASIN
Scale: 1cm=0.25m
All dimensions are in metre

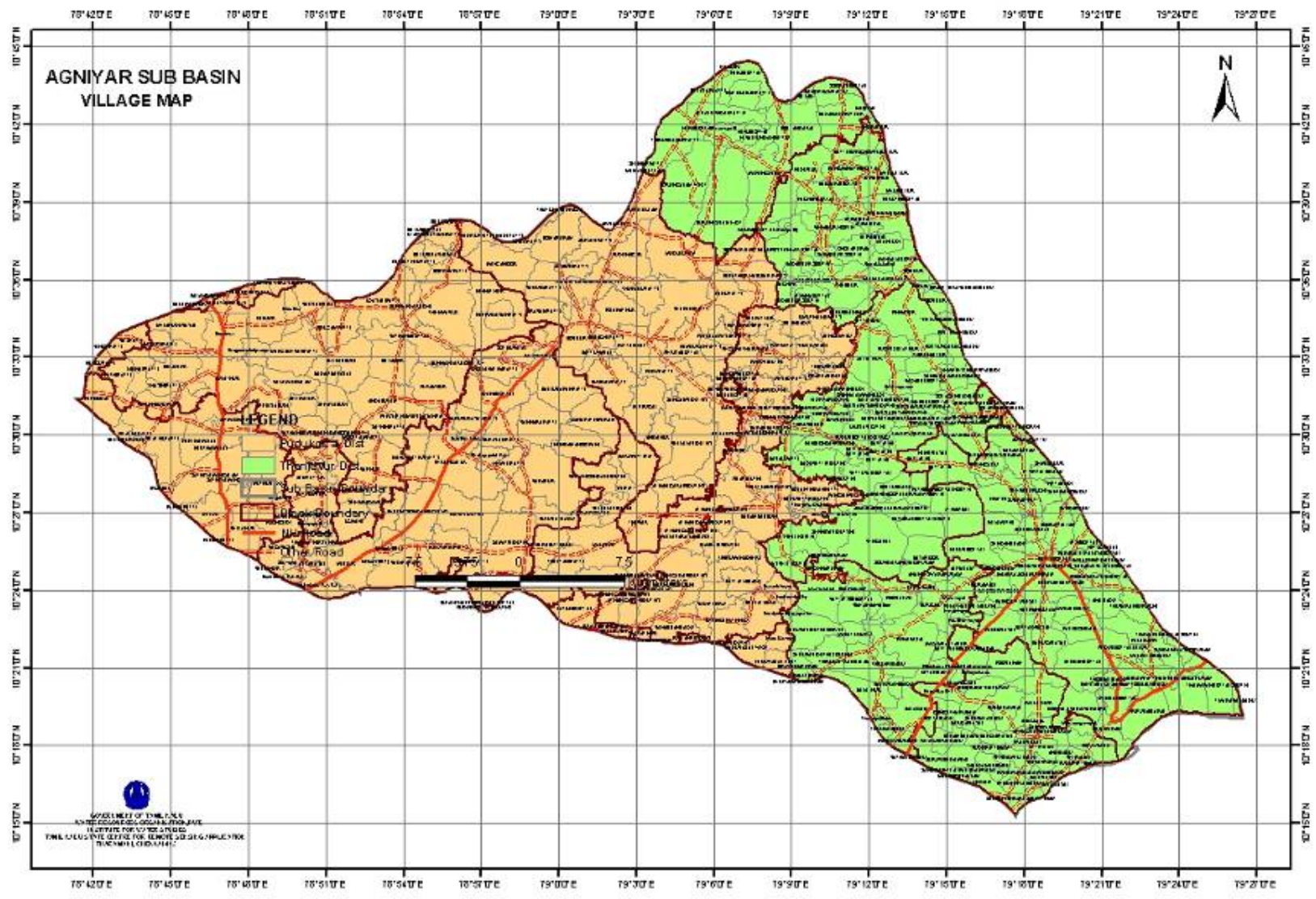


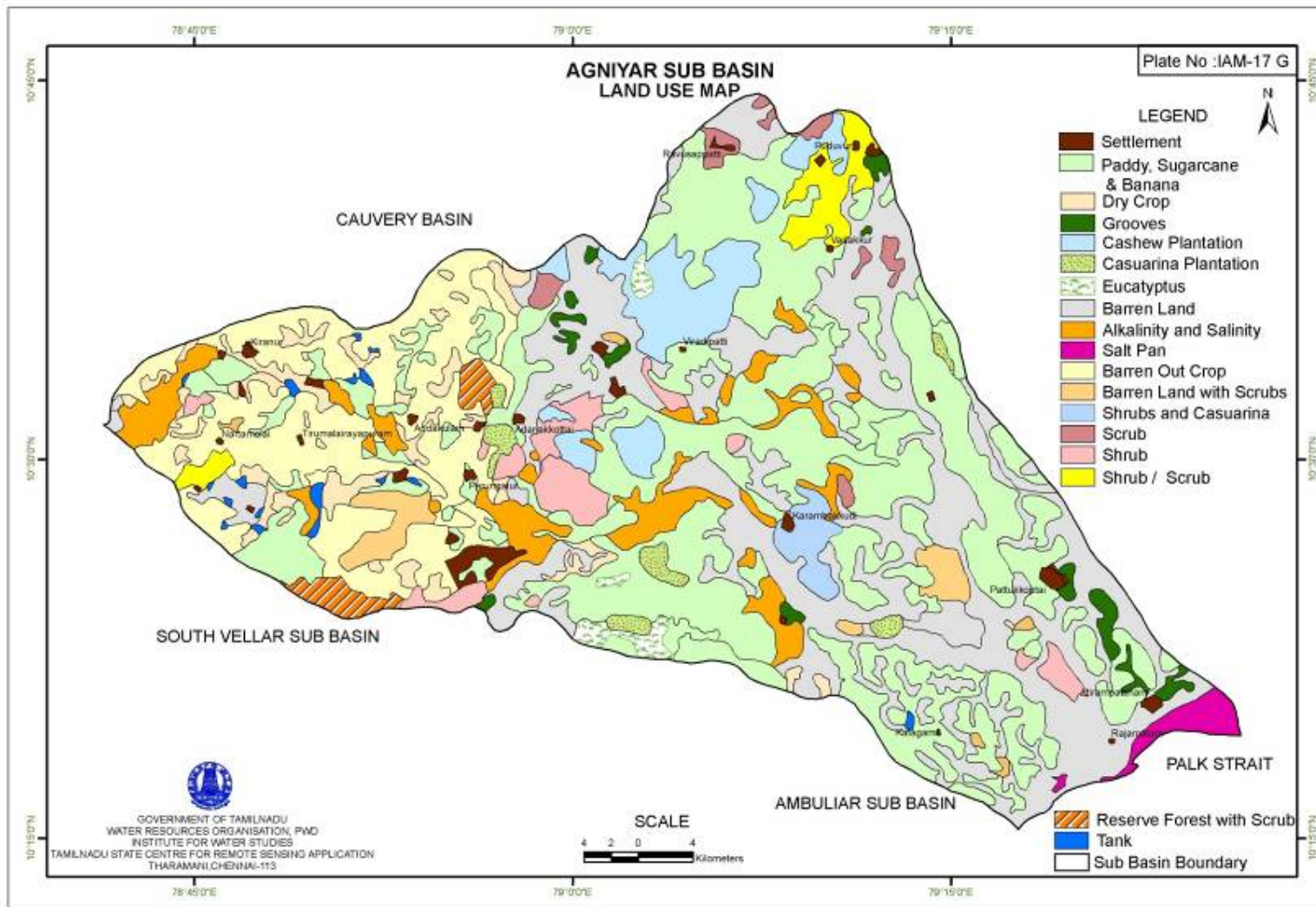
AGNIYAR SUB BASIN

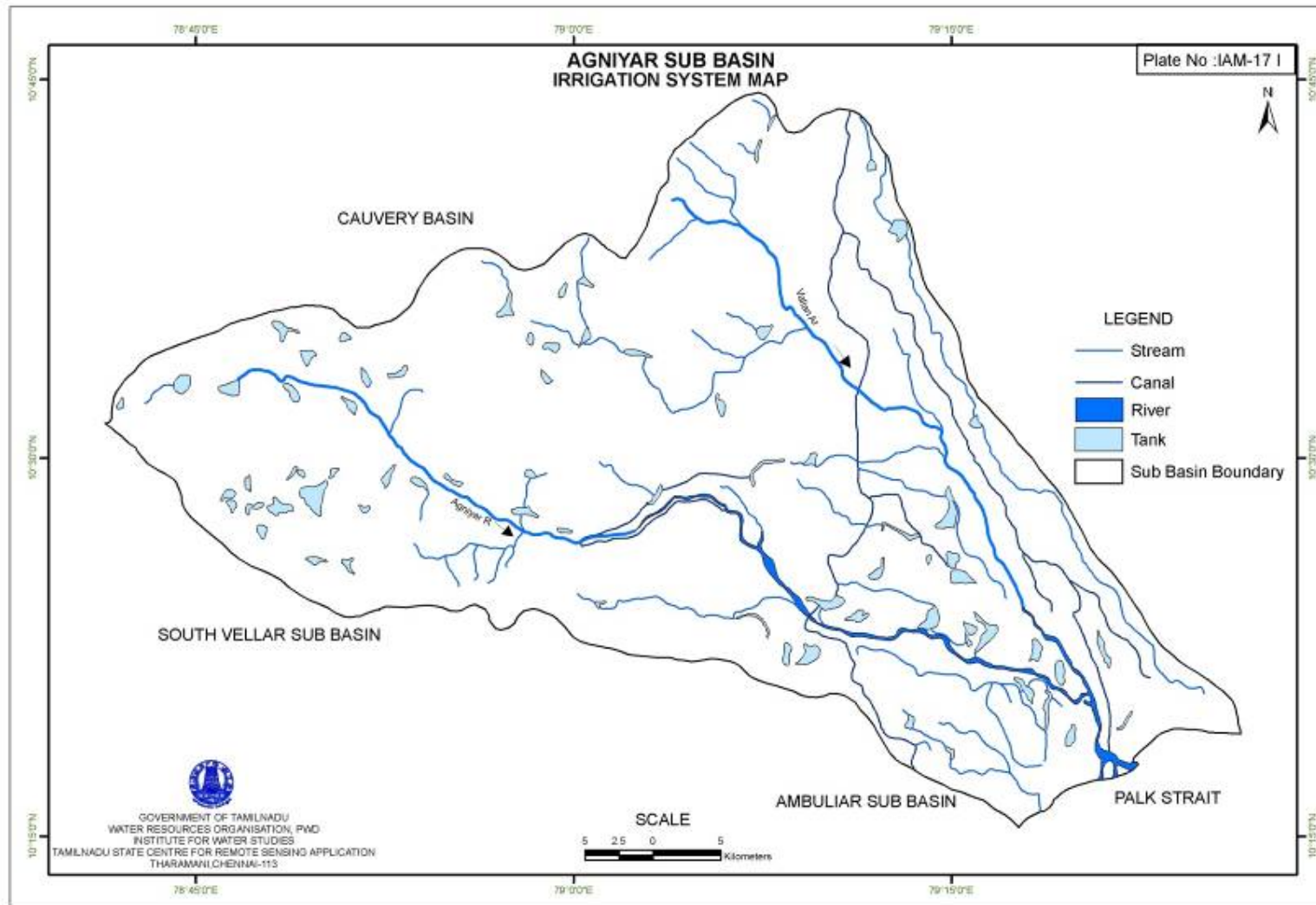
MAPS





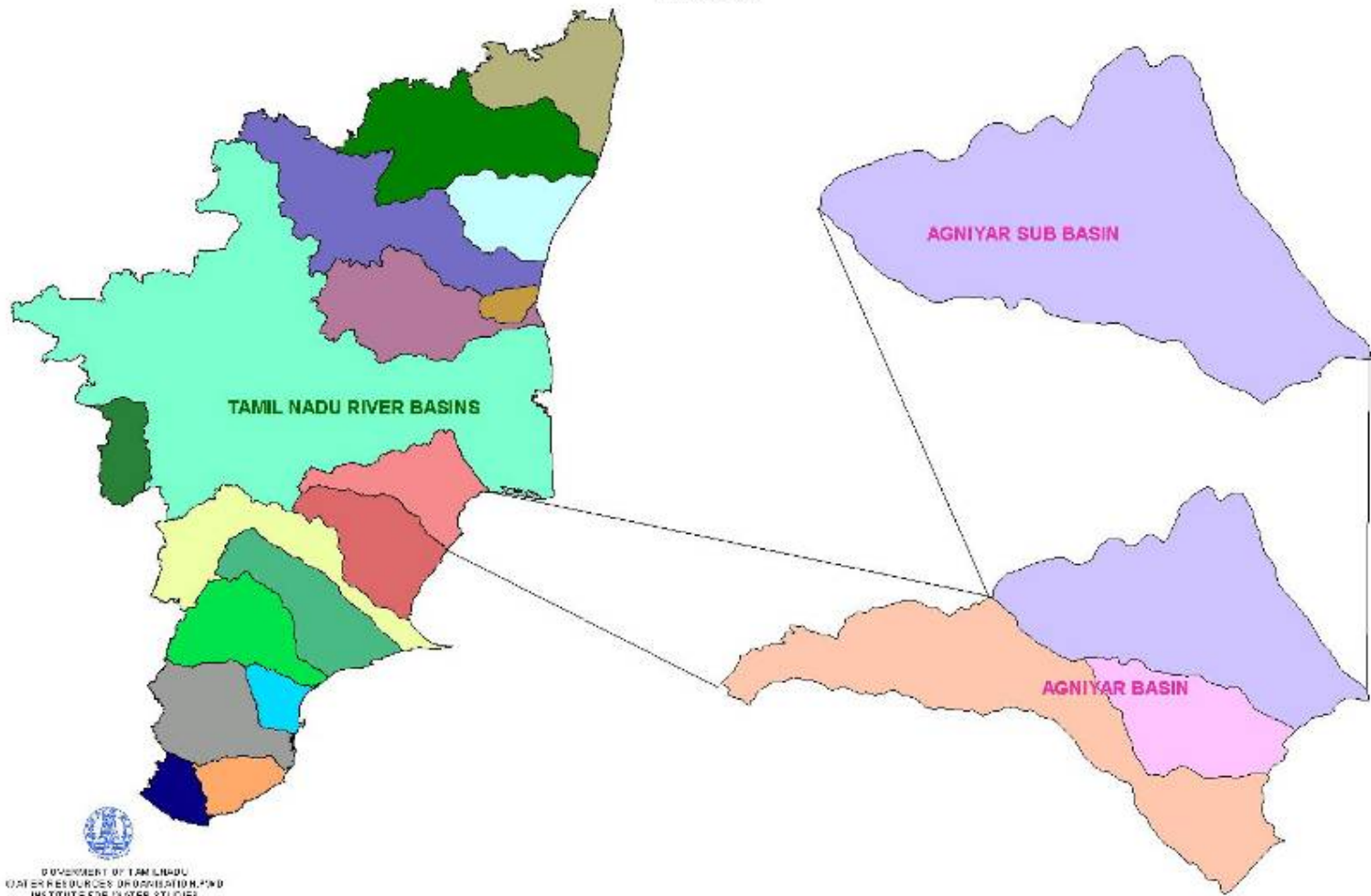






**AGNIYAR SUB BASIN
INDEX MAP**

Plate No: IAM-17 A




GOVERNMENT OF TAMIL NADU
WATER RESOURCES ORGANIZATION, PWD
INSTITUTE FOR WATER STUDIES
TAMIL NADU CENTRE FOR REMOTE SENSING APPLICATION
TIRUPUR, COIMBATUR

